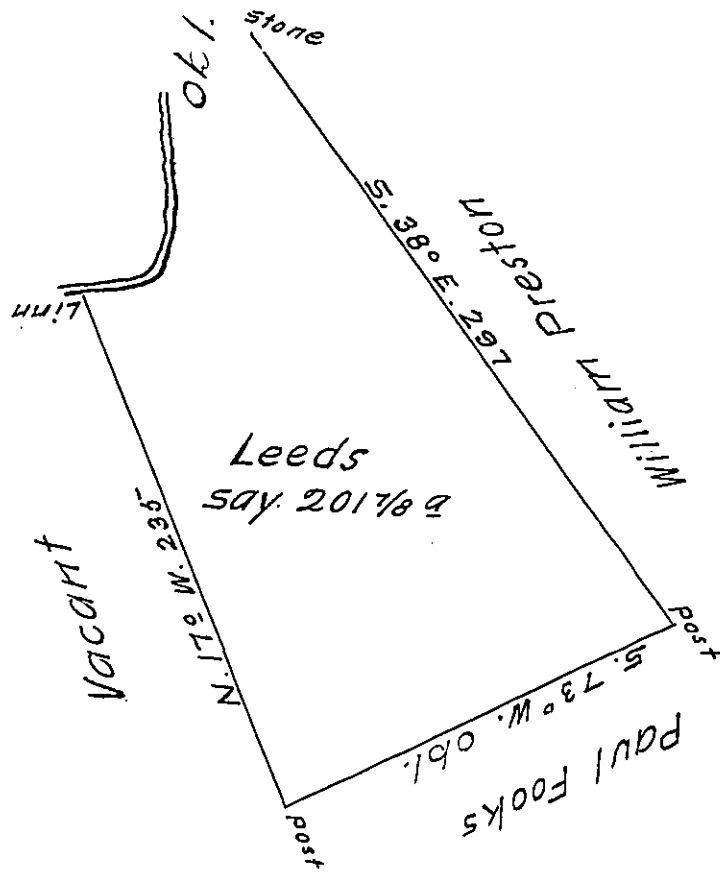


Courses down Char. Cr. }  
 Beg. at a Linn & running }  
 East 30<sup>th</sup> }  
 N. 15° E. 100<sup>th</sup> }  
 N. 45° E. 13<sup>th</sup> }  
 N. 65° E. 12<sup>th</sup> }  
 to a stone }



In pursuance of an order No 1969 dated 3<sup>d</sup> April 1769 the above is a draught of a tract of land call'd Leeds situated on the west side Monongahala, containing 201-3-26 acres with the usual allowance of 6<sup>th</sup> cent for roads & highways &c. survey'd 3<sup>d</sup> November 1769 for David Evans by

James Hendricks \_\_\_\_\_

To John Lukens Esq<sup>r</sup> S. G.

fees paid 12<sup>th</sup> Sept. 91

IN TESTIMONY that the above is a copy of the original remaining on file in the Department of Internal Affairs of Pennsylvania, made conformably to an Act of Assembly approved the 16th day of February, 1833, I have hereunto set my Hand and caused the Seal of said Department to be affixed at Harrisburg, this first day of December 1911

*Henry Howck*  
 Secretary of Internal Affairs.